



# **BUILDERS' METALWORK 2026**





## **ABOUT US**

ATF Supplies Ltd is a leading independently owned business supplying a wide range of products to the construction and joinery industries.

Established in 2001. We are based in Middlesbrough and will deliver to most areas of the North East for free, with no order too big or too small!

This brochure includes just a small selection of our product range so please get in touch if you cannot find what you are looking for.

## **HOW TO CONTACT US?**

By Telephone - 01642 457004

By Email - [sales@atfsupplies.com](mailto:sales@atfsupplies.com)

We can happily come and meet you should you require any on site help.

## CONTENTS

Product	Page
Timber Hangers	1
Wall Starter Kit	1
Restraint Straps	2-3
Structural Fixings	3-4
Wall Ties	4
Window Board Tie	5
Braces	5



## TIMBER HANGERS



### No Tag Timber Hangers

Designed to give a quick and simple solution for various timber to timber connections. The superior design allows the use of fewer nails for faster installation.

Code	Description	Size (mm)
GBMJ.1030	Timber Hanger No Tag Galvanised	44 X 125 to 220
GBMJ.1040	Timber Hanger No Tag Galvanised	47 x 125 to 220
GBMJ.1050	Timber Hanger No Tag Galvanised	63 x 125 to 220
GBMJ.1060	Timber Hanger No Tag Galvanised	75 x 125 to 220
GBMJ.1070	Timber Hanger No Tag Galvanised	100 x 125 to 220

### Long Leg Timber Hangers

Specially designed for deeper timber to timber applications. Ideal for loft conversion. They have increased leg lengths so that all widths can take up to 250mm deep joists.

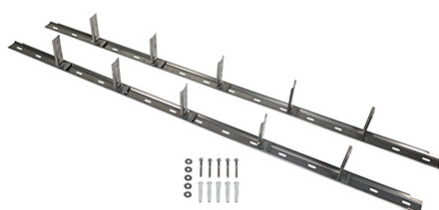
Code	Description	Size (mm)
GBMJ.1080	Timber Hanger Long Leg Galvanised	47 x 150 to 250

### Mini Timber Hangers

Designed to give a small and economic light weight timber to timber connection such as loft hatches and decking.

Code	Description	Size (mm)
GBMJ.1090	Mini Timber Hangers Galvanised	47 x 75 to 100

## WALL STARTER KIT



A stainless steel system, designed to join new walls to existing masonry, suitable for both internal and external brick or block walls.

#### Kit includes

- x2 wall rails
- x5 plugs/coach screws/washers/
- x10 wall rail connectors

Code	Description	Width (mm)	Length (mm)
GBMS.1110	Wall Starter Kit Stainless Steel	41	1170



## RESTRAINT STRAPS

### Restraint Bent Straps

Generally used for vertical restraint such as holding down a wall plate.

Code	Description	Length (mm)	Bend (mm)	Width (mm)
------	-------------	-------------	-----------	------------

#### Light Duty

GBMR.1120	Restraint Strap Bent Galvanised	900	100	2.4
GBMR.1130	Restraint Strap Bent Galvanised	700	100	2.4
GBMR.1140	Restraint Strap Bent Galvanised	1100	100	2.4

Generally used for horizontal restraint such as roof trusses, rafters and joists tied to masonry.

#### Heavy Duty

GBMR.1000	Restraint Strap Bent Galvanised	700	100	5
GBMR.1030	Restraint Strap Bent Galvanised	900	100	5
GBMR.1040	Restraint Strap Bent Galvanised	1100	100	5
GBMR.1050	Restraint Strap Bent Galvanised	1450	100	5

### Restraint Engineered Straps

Lightweight design makes it easy to handle, yet retains its structural strength so it can be used instead of traditional heavy duty straps in both horizontal and vertical applications.

Code	Description	Length (mm)	Bend (mm)
------	-------------	-------------	-----------

GBMR.1060	Engineered Heavy Duty Strap 600mm	500	100
GBMR.1070	Engineered Heavy Duty Strap 800mm	700	100
GBMR.1080	Engineered Heavy Duty Strap 1000mm	900	100
GBMR.1090	Engineered Heavy Duty Strap 1200mm	1100	100

### Restraint Twisted Straps

Generally used for vertical restraint such as holding down a wall plate.

Code	Description	Length (mm)	Twist (mm)
------	-------------	-------------	------------

GBMR.1100	Twist Strap Galvanised 600mm	500	100
GBMR.1110	Twist Strap Galvanised 1000mm	900	100



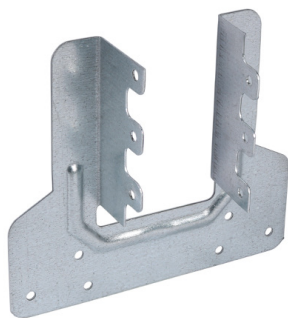


#### Restraint Flat Straps

Generally used for vertical restraint such as holding down a wall plate.

Code	Description	Length (mm)
GBMR.1150	Flat Strap Galvanised 1000mm	1000

### STRUCTURAL FIXINGS



#### Truss Clips

For fixing trusses, girders and rafters to a wall plate. Can also be used for general applications as a multi-purpose connector to provide restraint whenever two timber members cross.

Code	Description	Width (mm)
GBMS.1000	Truss Clips 38mm	38
GBMS.1010	Truss Clip 47mm	47



#### Nail Plate

A versatile perforated plate used for connecting or repairing timber. All holes are pressed countersunk to aid location of nail and to give a flush finish. Manufactured from galvanised steel to give a high level of corrosion resistance.

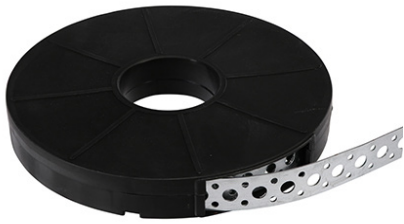
Code	Description	Width (mm)	Length (mm)
GBMS.1040	Nail Plate	85	178



#### Angle Bracket Heavy Duty

A versatile and general purpose 90 degree bracket used to strengthen timber joints. Manufactured from Galvanised Steel to give a high level of corrosion resistance.

Code	Description	Length x Height (mm)	Width (mm)
GBMB.1000	Angle Bracket Heavy Duty	90 x 90	62
GBMB.1010	Angle Bracket Heavy Duty	150 x 150	62



#### Fixing Band Galvanised

A versatile perforated metal strip which can easily be cut or bent to provide a quick and reliable light weight brace suitable for suspended pipework, cables and doing general repairs. Manufactured from Galvanised Steel to give a high level of corrosion.

Code	Description	Width (mm)	Length (mm)
GBMF.1000	Fixing Band Galvanised	18	10



#### Coil Brick Reinforcement

Produced for brick and block work reinforcement. It's primary usage is to prevent cracking. For ultimate corrosion resistance use stainless steel.

Code	Description	Width (mm)	Length (mm)
GBMS.1120	Coil Brick Reinforcement 65mm	65	20
GBMS.1130	Coil Brick Reinforcement 115mm	115	20
GBMS.1140	Coil Brick Reinforcement 175mm	175	20
GBMS.1150	Coil Brick Reinforcement 225mm	225	20



#### Timber Connector

Designed to increase the joint strength when bolting two pieces of timber together.

Code	Description	Outer (mm)	Hole (mm)
FTCT.1010	Timber Connector 50mm	50	14.0

## WALL TIES



Perfect for masonry cavity walls in domestic houses and small commercial buildings of up to three storeys and maximum 15m in height.

Code	Description	Length x Gauge (mm)
<b>Light Duty</b>		
200WT4	A2 Stainless Steel Light Duty Wall Ties	200 X 2.3
225WT4	A2 Stainless Steel Light Duty Wall Ties	225 X 2.3
250WT4	A2 Stainless Steel Light Duty Wall Ties	250 X 2.7
275WT4	A2 Stainless Steel Light Duty Wall Ties	275 X 2.7
<b>General Duty</b>		
225WT2	A2 Stainless Steel General Duty Wall Ties	225 X 3.0
250WT2	A2 Stainless Steel General Duty Wall Ties	250 X 3.0
275WT2	A2 Stainless Steel General Duty Wall Ties	275 X 3.0

## WINDOW BOARD TIE



A simple solution to tie windows to masonry. Manufactured from Galvanised Steel to give a high level of corrosion resistance.

- Three 4mm holes and two 6mm holes

Code	Description	Width (mm)	Length (mm)
GBMS.1100	Window Board Tie	12	147

## BRACES



### Stretcher Plate

For joining and strengthening applications.  
Slotted holes to allow for adjustments when strengthening draws and kitchen fittings.

Code	Description	Size H x L x W (mm)
FBFS.1000	Stretcher Plates Zinc	29 x 25 x 38



### Corner Braces

Strengthening inside corners.

Code	Description	Size L x W (mm)
FBFB.1000	Corner Braces Zinc Plated 25mm	25mm x 1"
FBFB.1005	Corner Braces Zinc Plated 38mm	38mm x 1 1/2"
FBFB.1010	Corner Braces Zinc Plated 50mm	50mm x 2"
FBFB.1015	Corner Braces Zinc Plated 63mm	63mm x 2 1/2"
FBFB.1020	Corner Braces Zinc Plated 75mm	75mm x 3"
FBFB.1025	Corner Braces Zinc Plated 100mm	100mm x 4"
FBFB.1030	Corner Braces Zinc Plated 120mm	120mm x 5"
FBFB.1035	Corner Braces Zinc Plated 150mm	150mm x 6"